



**NEW**

# Products

- Drop-In Frames
- Lollipop Stands
- Banner Stands
- CounterTops
- Incline Stands
- Charisma SEG 3D
- SEG Trifecta Stand
- SEG Expo Stand
- Recent Best Sellers
- Clear Partitions
- Custom Brackets
- Sanitizer Stands
- Vaccine Privacy Booth
- Cashier Shields
- SideBAR

US Made – FAST – No US tariffs  
Custom is our specialty



[DisplayStop.com](http://DisplayStop.com)

**DISPLAYSTOP**  
A BETTER WAY TO DISPLAY

888.777.8583

# Drop-In Frames

## Outdoor Folding A Frame & Slim Convex Poster SignHolder

### Outdoor Folding A Frames

- Aluminum, legs and stays
- Units collapse & fold compactly
- Accepts graphics from 5/32" up to 1/4" thick
- Top entry slot, non-slip tips
- Steel weight for added stability
- **AF22-OUTDOOR** for 22" x 24" graphic
- **AF24-OUTDOOR** for 24" x 36" graphic



AF24-OUTDOOR-S

### Great for Outdoor Use!

↓  
For Media  
from 5/32"  
up to 1/4" thick  
↑

#### Specify: Model

Model	Size	Color
<b>AF22-OUTDOOR-S</b>	22" w x 28" h	Silver
<b>AF22-OUTDOOR-B</b>	22" w x 28" h	Black
<b>AF24-OUTDOOR-S</b>	24" w x 36" h	Silver
<b>AF24-OUTDOOR-B</b>	24" w x 36" h	Black

-S Satin Silver or -B Matte Black



### Slim Convex Poster SignHolder

- Rise above customers with key messages
- Perfect for airports, exhibits, retail, restaurants, malls and tradeshow
- Avoid ladders while elevating message
- Change out graphics fast
- Built strong, all metal construction
- Holds 12" w x 92" h graphics



↓  
.040" to .060" thick  
Styrene Suggested  
↑

### Benefits of buying US Made

- Quality you can rely on
- Speed - Fast production and shipping
- No tariffs - Safe products
- No customs delays
- Support U.S. jobs

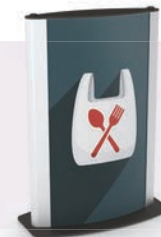


Table top  
available

Ideal for  
food service



VX1292-S

# Drop-In Frames Blade Poster SignHolder



## Blade Poster SignHolders™

- Slender 5/8" thick profile
- Welded steel base
- Suitable for high traffic areas
- Custom sizes and colors available

Amazingly thin!



### Customization

Sizes, colors, different bases.  
Quantity minimums apply.



Release snap button and bottom frame pivots for graphic insertion

### Specify: Model

Model	Tiers	Graphic w" x h" Ht.	Wt.
<b>BL1422-1</b>	1	14" x 22" 65"	7 Lbs.
<b>BL1422-2</b>	2	14" x 22" 73"	9 Lbs.
<b>BL1422-3</b>	3	14" x 22" 88"	11 Lbs.
<b>BL2228-1</b>	1	22" x 28" 65"	8 Lbs.
<b>BL2228-2</b>	2	22" x 28" 73"	11 Lbs.
<b>BL2228-3</b>	3	22" x 28" 93"	13 Lbs.

Matte Black

### Accessories



Weighted Cover

**BLWC14** For **BL1422** 14" x 22" (~15 lbs.)  
**BLWC22** For **BL2228** 22" x 28" (~25 lbs.)



**SLB3** Lit. Baskets (for 22" w units only)  
(1) 11" x 17" tabloids or  
(2) 8-1/2" x 11" stacks.



Coroplast® White, 4 mm  
**COR6** 14" x 22"  
**COR7** 22" x 28"



Clear or Matte lenses, sold in pairs.  
**CPL6** or **CPM6** 14" x 22"  
**CPL7** or **CPM7** 22" x 28"

# Drop-In Frames

## Monster Frame Divider



### Monster Frame Pedestal SignFrames™

- NST2436-S
- With horizontal divider
- 19" Round 15 lbs base

### Monster Frame Shoe Shelf

- Monster Drop-In Frames
- Accommodates graphics up to 1/4" thick
- 1-1/4" profile, top load
- Shown with optional drop in crossbar and custom shoe shelf



### Monster Frame Aisle Markers



### Monster Frame Divider

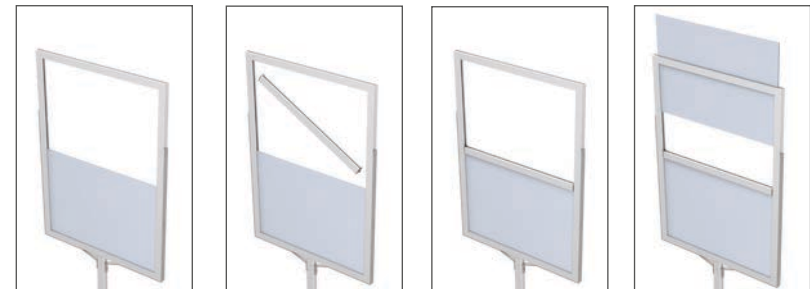
- Frame with divider and shelf



### Terrific for:

- Wayfinders
- Restaurants
- Retail Environments
- Banks

### Frame adapts as your needs change



Increased flexibility, subdivide the frame into different graphic spaces. Customized to fit your needs. Use the same frame many different ways.

# Drop-In Frames

## Floating StandOff Mounts™



Floating StandOff Mount hangs from wall cleat.

### Floating StandOff Mounts™

- Support for the digital image revolution
- Artists everywhere are printing on metal panels, and the images are often eye popping.
- Increase impact by using our new Floating StandOff Mounts – today's new modern way to display digital prints.
- Prints are set off the wall an inch creating a floating effect, framelessly, with no visible hardware.

#### Bulk Components

Model	Corners & Tubing
<b>OATCL4</b>	1" Square "L" Corners (Bag of 4)
<b>OATCL100</b>	1" Square "L" Corners (Bag of 100)
<b>OATCSQ72</b>	1" Square Aluminum 72" long
<b>OATCCR72</b>	1" Square Aluminum Cleat Receptive 72" long
<b>OATCFC72</b>	French Cleat 72" long
<b>OATCHB100</b>	High Bond Tape, Pack of 100 pcs. 3" long

#### Complete Kits

Includes StandOff Mount, Aluminum Mounting Cleat & High Bond Mounting Tape.

Model	StandOff Mount Graphic Size
<b>OAT1818</b>	18"w x 18"h 24"w x 24"h Graphic recessed 3"
<b>OAT1830</b>	18"w x 30"h 24"w x 36"h Graphic recessed 3"
<b>OAT2434</b>	24"w x 34"h 30"w x 40"h Graphic recessed 3"
<b>OAT3042</b>	30"w x 42"h 36"w x 48"h Graphic recessed 3"
<b>OAT4266</b>	42"w x 66"h 48"w x 72"h Graphic recessed 3"



#### Specify Orientation

-H Horizontal (Landscape)

-V Vertical (Portrait)

Digital print (not included), attached to StandOff Mount.

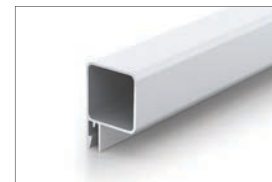
### Components - Parts



Right angle push in corners.



1" square aluminum, quick, tool-free assembly.



Top section hangs from wall cleat.



Wall mount cleat includes mounting holes. (mill finish aluminum)

# Drop-In Frames

## Lollipop Stands

### Lollipop Stands™

- Unique drop-in design
- 13" and 15" diameter standard models
- Use with circular or shape cut rigid graphics
- Lightweight & portable
- Built to last with all metal construction
- 13" diameter 7 lbs steel base
- Ideal for double sided graphics
- Unassembled for cost efficient shipping

↓  
For Rigid Media  
up to 6mm / 0.236"  
↑

Model	Minimum Graphic Size	Wt. lbs
<b>LOLPOP13-H-B</b>	13" Diameter half circle	9
<b>LOLPOP15-H-B</b>	15" Diameter half circle	9

Color **-B** Matte Black



Ideal for circles  
+  
Limitless Shape Cut Options



36" h Upright

2x screws for strong attachment

LOLPOP15-H-B

LOLPOP13-H-B

# Drop-In Frames Lollipop Stands™

Perfect for Restaurants, Retail, Hotels, and more!



## Custom is our specialty

We can customize a solution to your needs, including size, shape, color, and more!  
Min qty 25+ depending on complexity



Wall or column mounts available



# Banner Stands

## Allé Fabric Pillowcase Stand



Curved Allé Stand

APC1 with  
GFX-APC



Curved Angled Stand

APF1 with  
GFX-APF  
Curved Flat Stand

APA1 with  
GFX-APA  
Model Travel Bag Description



Unique Eye Catching Shapes

Stand	Graphic	Description
APC1	GFX-APC	Curved Allé
APA1	GFX-APA	Angled Allé
APF1	GFX-APF	Flat Allé

Beautiful graphics & attractive shapes demand attention!



EBG-A Travel Bag to hold the stand and graphic.



### Allé Pillowcase Banner Stands™ Graphics

- Customized versions available and quoted on request.
- Close tolerance aluminum alloy tubing.
- Swaged and spring button construction.
- Weighted steel base with reliable support bushing.
- Units ship economically and are easy to assemble without tools.
- Designed for ~33" w x ~80" h graphics



Units ship economically and are easy to assemble without tools.

# Banner Stands

## American Eagle Pole Pocket

### American Eagle Banner Stand

Elegant - Fixed Width Banner Stands

- Lightweight & strong• Pole pocket mounting
- Satin finishes• Portable, built to last
- Steel weighted bases• 8' & 10' sides in 2 screw
- Aluminum alloy together sections

Stand Graphic Graphic Size Bag

**FBS56 GFX-FBS56** 5' w x 6' h

**FBS58 GFX-FBS58** 5' w x 8' h **EBG9**

**FBS66 GFX-FBS66** 6' w x 6' h

**FBS68 GFX-FBS68** 6' w x 8' h

**FBS86 GFX-FBS86** 8' w x 6' h

**FBS88 GFX-FBS88** 8' w x 8' h **EBP4** or **EBG9**

**FBS108 GFX-FBS108** 10' w x 8' h **EBG9**

**FBS1010 GFX-FBS1010** 10' w x 10' h **EBG9**

2-3/4" Pole Pocket  
recommended for graphics

Model Travel Bag Description

**EBG9** 63" Single Carry Bag

**EBP4** Premium Padded Bag - 3" x 12" x 48"

Pole Pocket mounting for  
1-1/4" diameter crossbars



Racetrack oval  
laser cut bases

Center Support to level crossbar

**FBS86**

Satin finished aluminum  
tightening pucks



8' & 10' wide units have  
center support plate.

Please note:  
Support plate is off center.

Aluminum alloy 1-1/4"  
satin finished uprights

Quality constructed,  
built to last

Color



**-S** Satin Silver

Unit ships knocked down  
for cost efficient transit.



LED with Clamp for  
Graphic Stands

**LEDLF**

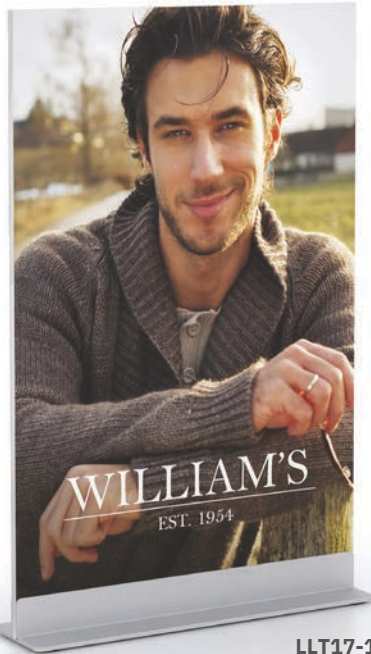


# CounterTop Displays

## Double LL Mounts & Adjustable Double LL Mounts

### CounterTop Double LL Mounts™

- Heavy gauge solid steel
- Welded construction
- Texture powder coated finish
- 2-1/2" Wide x 1" High
- Non skid, non marking pads
- Rounded corners
- Polybagged, bulk packed



LLT17-14-S

**Redesigned!**

Comes fully assembled, no tools required

Sleek modern design

Graphic simply drops into receiving track

### 3/16" Graphic Track

Model Track Length

LLT85-316 8-1/2"

LLT11-316 11"

LLT14-316 14"

LLT17-316 17"

LLT24-316 24"

LLT30-316 30"

### 1/4" Graphic Track

Model Track Length

LLT85-14 8-1/2"

LLT11-14 11"

LLT14-14 14"

LLT17-14 17"

LLT24-14 24"

LLT30-14 30"

Specify: Size — Color -S Satin Silver or -B Matte Black



### Adjustable CounterTop Double LL Mounts

- Accepts all self standing media up to 1/2" thick
- Steel construction
- 2-1/2" Wide x 1" High
- Powder coated finishes
- Tremendous flexibility

Adjustable screws to accommodate up to 1/2" thick media



Model Length

ALLT85 8-1/2"

ALLT11 11"

ALLT14 14"

ALLT17 17"

ALLT24 24"

ALLT30 30"

### Customization ideas

- Choices include custom • Lengths • Color matches
- Graphic thickness • Multiple track units for layering effects



# CounterTop Displays

## Wireform

### Wireform Fabric Pillowcase Stands



- Use dye sublimated fabric graphics on these economical stands.
- Simple slip over and on, Double sided impact.
- All metal, welded, matte black, fully assembled.

Model Graphic Size

**WFPC1117** 11" w x 17" h

**WFPC1422** 14" w x 22" h

All CounterTop Stands are bulk packed.



### Customize for your needs!

Custom requests whether for size, color or other aspect are encouraged.



### Wireform Flip Ring Stands

- Use semi-rigid graphics with holes on these economical stands.
- Use a single graphic or multiple ones and "flip" from one hanging graphic to another.
- All metal, welded, matte black, 1" silver rings, fully assembled.

Model      Graphic Size Rings

**WFFR57**      5" w x 7" h 2

**WFFR8511**    8-1/2" w x 11" h 2

**WFFR1185**    11" w x 8-1/2" h 3

**WFFR114**    11" w x 4" h 3

### Wireform J Hook Stands



- Use semi-rigid graphics with holes on these economical stands.
- Simply hang punched graphics from hooks. Double sided impact.
- All metal, welded, matte black, fully assembled.

Model Graphic Size J hook centers

**WFJH1117** 11" w x 17" h 5 1/2"

**WFJH2217** 22" w x 17" h 11"

**WFJH3614** 36" w x 14" h 18"



# Charisma SEG™

## Incline Stands



**INCSEG1-2260-S**

### Incline Stands™

- All metal construction, built to exacting standards
- Ships flat, 60 second set up, portable
- Many different frame options, single or double sided
- Lightweight and strong, but portable and effective
- Standard graphic size is 22" x 60"

A nice way to provide ambience and information in retail settings.

### Our most popular Front Options:

**EasyOpen SnapFrame™**  
Poster & paper signs up to 1/32"



**Monster Drop-In Frames™**  
Thin graphics up to 1/4" board



**Charisma SEG Frame™**  
Silicone edge fabric graphics



### Standard and custom models available



**INCEO1-2260-S**  
One-sided  
SnapFrame

**INCEO2-2260-B**  
Two-sided  
SnapFrame

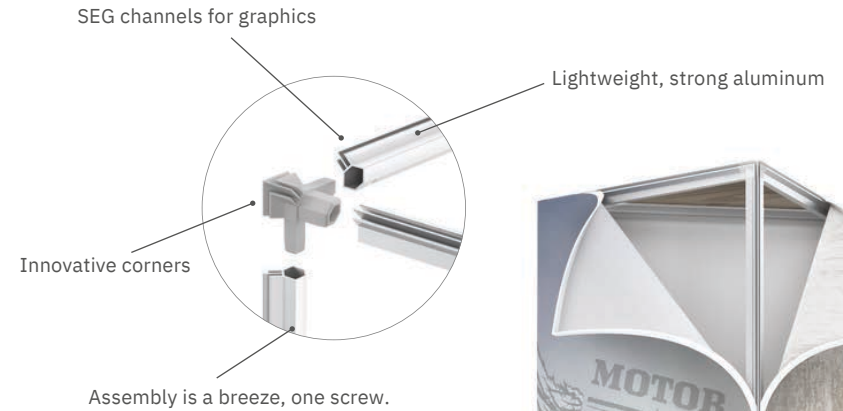
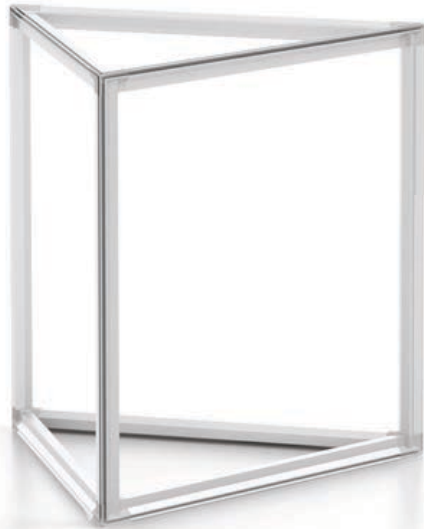
**INCNST1-2260-B**  
One-sided  
Monster Frame

**INCNST2-2260-S**  
Two-sided  
Monster Frame

**INCSEG1-2260-S**  
One-sided  
SEG Frame

**INCSEG2-2260-B**  
Two-sided  
SEG Frame

# Charisma 3D SEG™ Triangular Towers



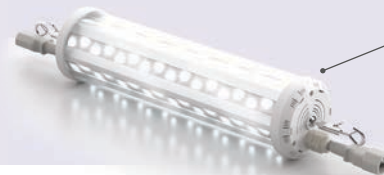
## Triangular Towers – Non Lit

- Floor model standard
- Unique profile and corner
- Easy SEG graphic changeouts
- Square or Triangle Shape
- Satin Silver Finish
- Custom sizes available
- Ships flat for cost effective shipping
- Hanging quoted on request

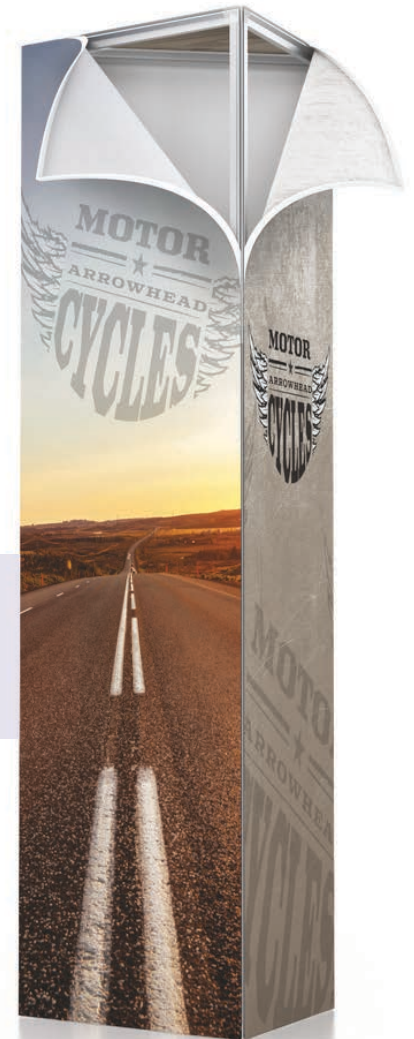
Easy to attach  
and change out graphics

## Available Torpedo LED Exhibit Light

- Plug and play
- ETL Listed
- 6500K color temp.
- 6' high units have two lights



Plug and play  
LED light



Custom Sizes  
Available

XS3G

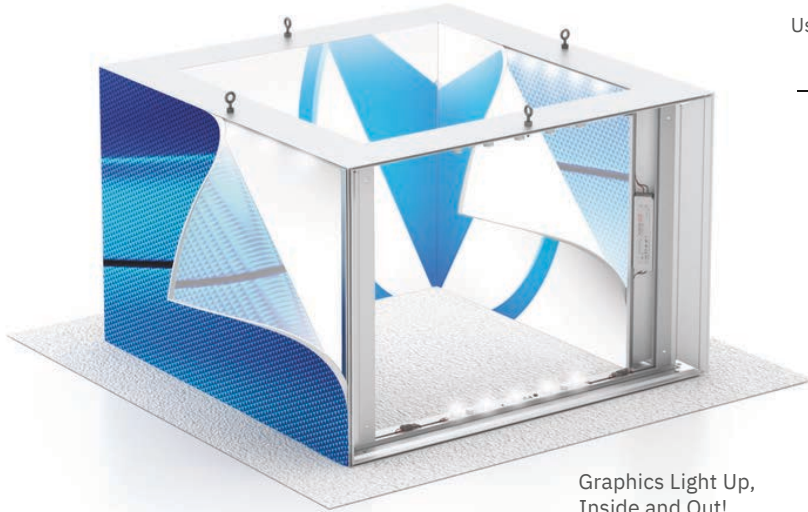
Square Cubes		
Model	Lit	W x D x H
<b>XS2C</b>	<b>XS2C-LED</b>	2' x 2' x 2'
<b>XS3C</b>	<b>XS3C-LED</b>	3' x 3' x 3'
<b>XS4C</b>	<b>XS4C-LED</b>	4' x 4' x 4'

Rectangular Towers		
Model	Lit	W x D x H
<b>XS2T</b>	<b>XS2T-LED</b>	2' x 2' x 6'
<b>XS3T</b>	<b>XS3T-LED</b>	3' x 3' x 6'
<b>XS4T</b>	<b>XS4T-LED</b>	4' x 4' x 6'

Triangular Towers		
Model	Lit	W x D x H
<b>XS2G</b>	<b>XS2G-LED</b>	2' x 2' x 6'
<b>XS3G</b>	<b>XS3G-LED</b>	3' x 3' x 6'
<b>XS4G</b>	<b>XS4G-LED</b>	4' x 4' x 6'

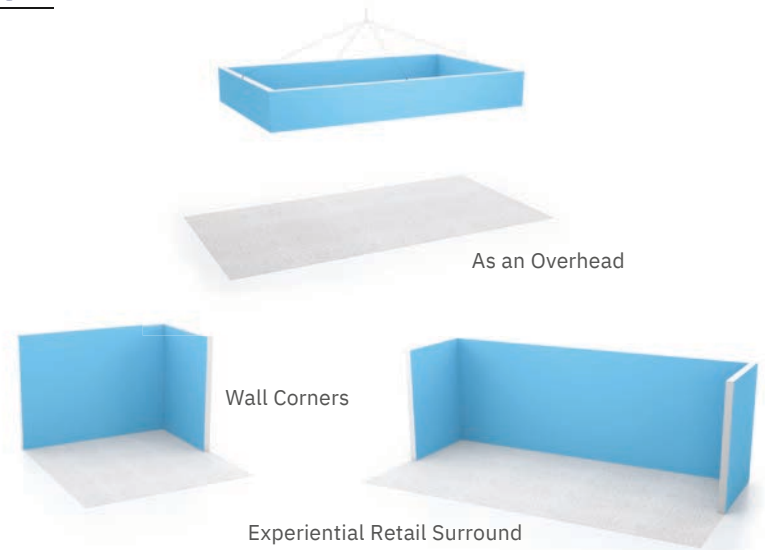
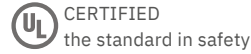
# Charisma SEG/LED Inside Out Light Boxes™

## Recent Best Sellers



Graphics Light Up,  
Inside and Out!

Usable in different configurations  
L's, U's and Straight Walls



### Illuminated Inside and Out!

- LED light strips along top and bottom rails
- LEDs feature wide beam angles, and long life
- Lights are 6500°K color temp, low heat
- Aluminum trim is satin silver
- Easy SEG graphics installation and change out
- Power supply cords exit the top of the lightbox

### SEG/LED Inside Out Light Boxes™

- Dramatic effects
- Easy SEG installation
- Lighting – both inside and out
- Custom sizes available
- Heavy duty construction
- Satin silver finish

Model	W x D x H	Great For:	Suggested Use:
<b>XSI084</b>	8' x 4' x 2-1/2'	• Retail stores	• Hanging
<b>XSI0812</b>	8' x 12' x 2-1/2'	• Showrooms	• Corners
<b>XSI01010</b>	10' x 10' x 2-1/2'	• Lobbies	• Freestanding
		• Exhibitors	• Partitions

Allow additional lead time  
for these units



# Charisma SEG Trifecta and Expo Stand™

## Recent Best Sellers

**Ultimate Flexibility**  
Use with 1, 2 or 3 graphics!



**XP3N1**  
with (3)  
graphics

Model	Height	Weight
<b>XP3N1</b>	72"	30 lbs

### Charisma Trifecta Stands™

- Double Sided Charisma SEG
- Show One, Two or Three Graphics Per Side
- Aluminum alloy frame
- Weighted 22" x 18" steel base

### Display Options For Each Side

- (1) 22" x 72" graphic
- (3) 22" x 24" graphics
- (1) 22" x 24" and (1) 22" x 48" graphics

### Charisma SEG Double Sided Expo Stands

- Easy SEG Insertion
- Aluminum construction
- Double sided viewing
- Simple assembly
- Bases: Full width (XPS) / Round base (XPLF)

Lit LED units  
also available



**XPS72**



**XPS28**

Model	Graphics	Graphics Size	Base Uprights	Ht.	Wt. lbs
<b>XPS28</b>	2	22" x 28"	24" x 12" 2	64"	21
<b>XPS36</b>	2	24" x 36"	24" x 12" 2	72"	22
<b>XPS72</b>	2	24" x 72"	24" x 12" N/A	72"	22
<b>XPLF28</b>	2	22" x 28"	17" Round 1	64"	19
<b>XPLF36</b>	2	24" x 36"	17" Round" 1	72"	20

# Recent Best Sellers

## Hercules Roll Around SignHolders™

- Heavy duty 22" x 28" Portable SignHolders
- 30 pound steel powder coated base
- 3" ball bearing locking casters with brakes
- Double sided viewing
- Aluminum alloy frames
- Large format oval uprights



↓  
For Media  
up to 3/16"  
↑

Top load 3/8" margin covered by frame.

**RL328-S**



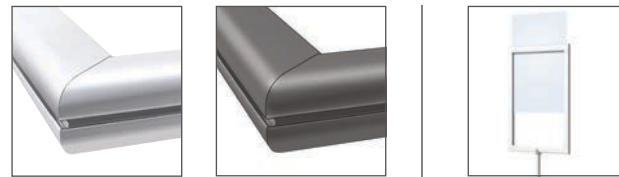
## Perfex Pedestal SignFrame™

- Heavy duty extruded alloy
- Accepts graphics to 3/16" thick
- Curvilinear frames, top slot
- All frames are open 2 sides
- All Metal - Contemporary Design

↓  
For Media  
up to 3/16"  
↑

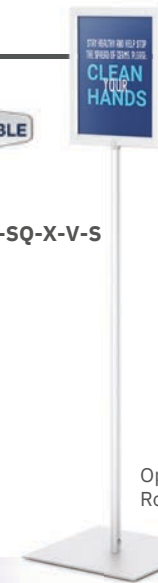
IMPRINTABLE

**SF3S-SQ-X-V-S**



Sleek, functional, curvilinear design, Top Loading, Accepts available in Satin Silver or Matte Black Media To 3/16" Thick

Custom sizes Available



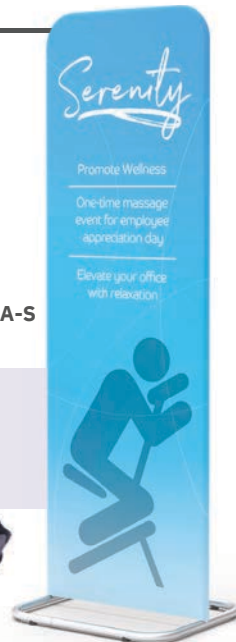
Optional Round Base

## Harmony Air Banner Stands™

- Portable - fits in airline carry on
- 1" constant diameter aluminum uprights. Sleek design.
- Swaged, spring button, and shock cord construction.
- Curved or square tops
- Feather light at 3-4 lbs
- Tubular aluminum base

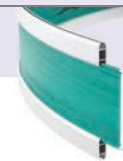
**HMN1-A-S**

Rolling carry-on bag available  
**EBG-S**



## Fabric Hemmed Graphics

Plastic dowels (included) insert into hemmed pole pockets top and bottom.



or

## Styrene Graphics

Hang from internal plastic screw spacer sets (included).



## Halo Rail™ Kits

- Curved satin aluminum profiles handsomely house pole pocket graphics
- Strong, yet lightweight
- Height is 2-1/2" higher than graphic
- Ships ready for very easy assembly. Eyebolts come already attached
- Quick graphic changeouts
- No costly vertical struts needed

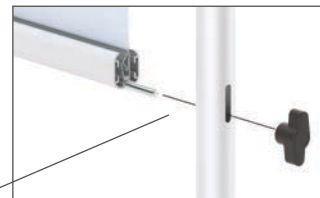
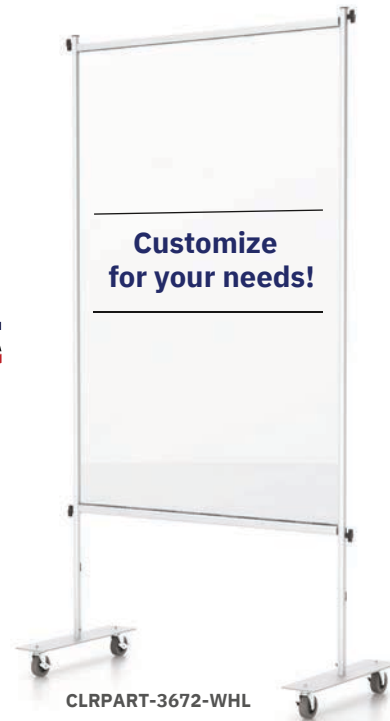


# Clear Room Partitions™

## Recent Best Sellers

### Clear Room Partitions™

- Offered in 2 style bases - Heavy Steel bases & Wheeled bases
- Fire retardant clear plastic lens (NFPA701)
- Portable, strong & lightweight
- Quick and easy setup
- Knocked down for shipping savings
- Offered in 2 sizes, custom sizes available



The Clear Room Safety Partition is ideal for the office, restaurant, salon, hotel lobby and any other environments that require social gathering. The movable safety partition allows you to setup spaces on demand.



Heavy Steel Base



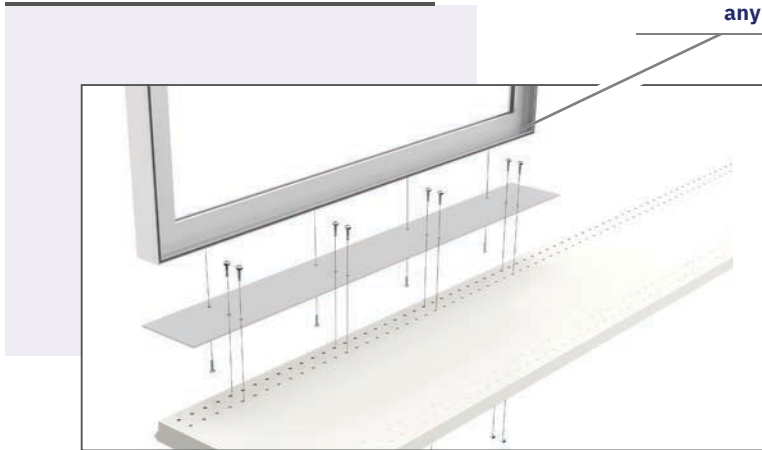
Wheel Base

Model	Size	Description
CLRPART-3672	36" w x 72" h	Floor Partition Stand with clear vinyl
CLRPART-7272	72" w x 72" h	Floor Partition Stand with clear Vinyl
CLRPART-3672-WHL	36" w x 72" h	Floor Partition Stand with wheel base and clear vinyl
CLRPART-7272-WHL	72" w x 72" h	Floor Partition Stand with wheel base and clear vinyl

# Custom Brackets

## Retail Customer Examples

### Shelf Attachment

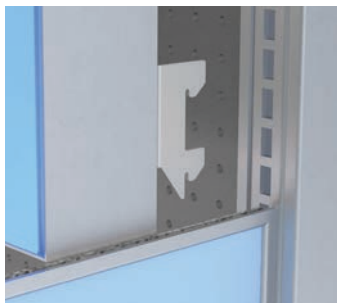


Attach our Graphic Frames to existing Gondola Shelving.

Connect any frame



### Slotted Standard Brackets



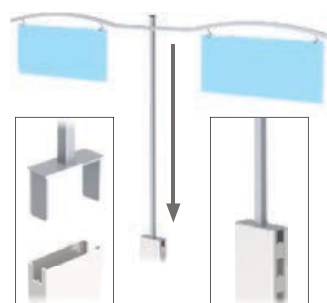
Brackets to fit any standards including Lozier, Madix, or Opto, and warehouse racking

### Standoff from 1/2" Merchandising Bar



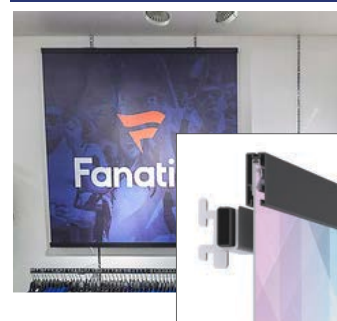
Standoff  
Sturdy, welded construction

### Drop into Uprights



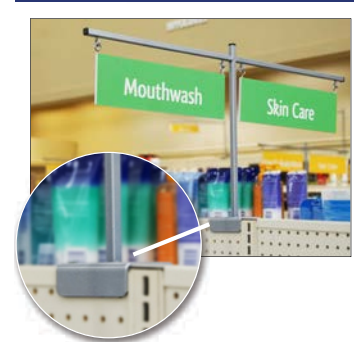
Base  
Slides into existing Lozier, Madix, or warehouse racking

### Drop into Existing Cup Brackets



Drop into existing cup brackets, aluminum SnapGraphics SN5

### U Brackets



Brackets  
Fits over existing fixture

Tailored to your application!



### Custom is our specialty – Reach out today

#### Hinged Shelf Covers



**Soft close**  
Stay open hinge covers shelves with or without merchandise

#### Pegboard / Slatwall Standoffs



#### Clamp Under Case



Underside View  
“U” bracket is fastened to existing beam under display case



#### Clamp Bases



Swivel parallel or perpendicular

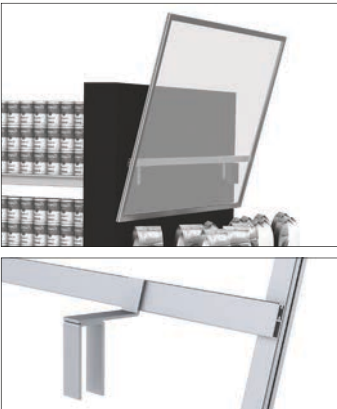


#### Shelf Divider Graphics



Back View

#### Angled Header Standoff Frame



#### Merchandising Arm Signs



#### Fixture Cover



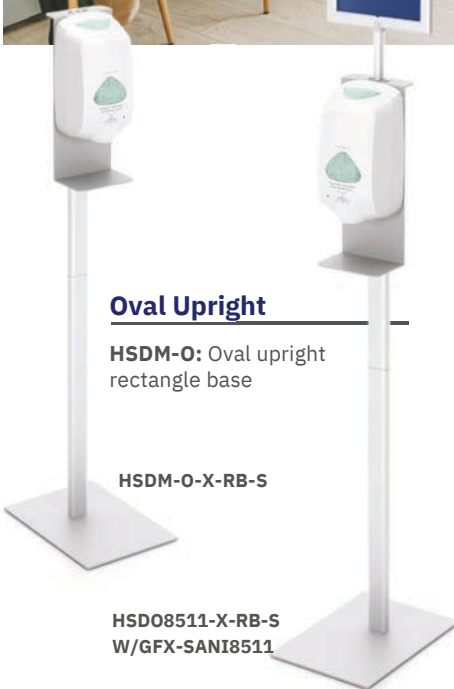
Mounting Brackets hangs onto (4) posts

#### Fixture Spine Shoe Divider



Fits over existing fixture spine

# Hand Sanitizer Dispenser Stands



## Hand Sanitizer Dispenser Stand

- Fixed 48" H upright (2 section upright)
- Unit without sign includes a screws at top for attaching sign back plate
- Optional SignHolder - Attaches to top of back plate, top loading sign frame 8.5" W x 11" H or 11" W x 14" H
- Optional styrene graphic (GFX-SANI8511 and GFX-SANI1114)
- Custom sizes available starting at qty 25, reach out for a quote



## Manual – Lowest Cost Stands

**HST:** Floor stands for smaller bottles



**HSG:** Floor stands for gallon bottles



**HSTW:** Wall Mount bottle holder (set of 4)



## Automatic Dispenser Stands

**HSDM:** Floor stands for automatic dispensers



**HSD8511 or HSD1114:** Floor stands with frame



**HSC:** Countertop dispenser holder



## Foot Operated

**HSG:** Foot operated sanitizer dispenser



## Wipes

**HSW:** Floor stands for wipes



**HSW-W:** Wall Mount wipes holder



Dispensers, Sanitizers, & Wipes not included

# Vaccine Privacy Booth

Fabric graphics create branded privacy booths



PW353 w/GFX-PW353-D | Stand with double sided pillowcase graphic

## Vaccine Privacy Booth

- Brandable
- Portable
- Optional Fabric Graphics



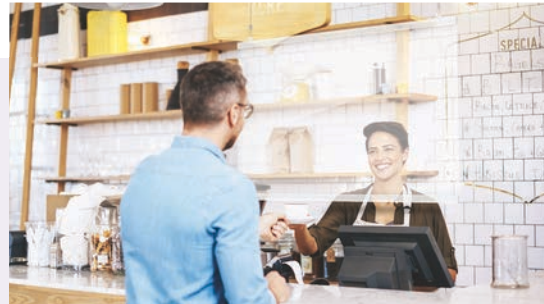
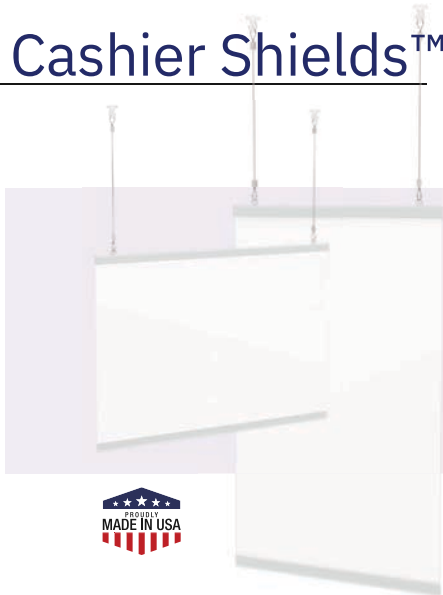
## Rigid Panel Vaccine Privacy Booth

- Rigid Panels and Skyscraper Mounts



(1) SKMM6-S | (2) SKRA6-S | (1) SKCU6-S and Rigid Graphics (not included)

# Cashier Shields™



Model	Size	Description
<b>GCHS-2822</b>	28" w x 22" h	2 <b>ANC05</b> , 2 <b>ADC1312</b> , 1 Lens
<b>GCHS-5622</b>	56" w x 22" h	2 <b>ANC05</b> , 2 <b>ADC1312</b> , 1 Lens

## Hanging Cashier Shield Kit Includes:

- Top and bottom GC Gripper Extrusions
- 1 Thin clear lens included
- 2 Universal hanging clips
- 2 Cables with adjustable cable locks
- Clear hinged hooks for dropceiling attachments
- Standard 28" w x 22" h or 56" w x 22" h



C-clamp install

## Fixed Position System

Custom Example – Minimum Qty of 50 –  
Designed to your specification!

### Each Kit Includes:

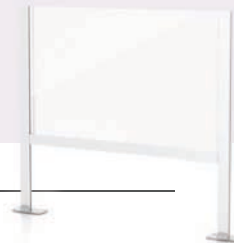
- Mini Oval Uprights with panel mounting hardware
- Put holes in your clear plastic to mount
- Non-marring clamp on base
- Custom sizes available

## Adjustable Channel Free Standing and "L" Shape System

Custom Example – Minimum Qty of 50 – Designed to your specification!

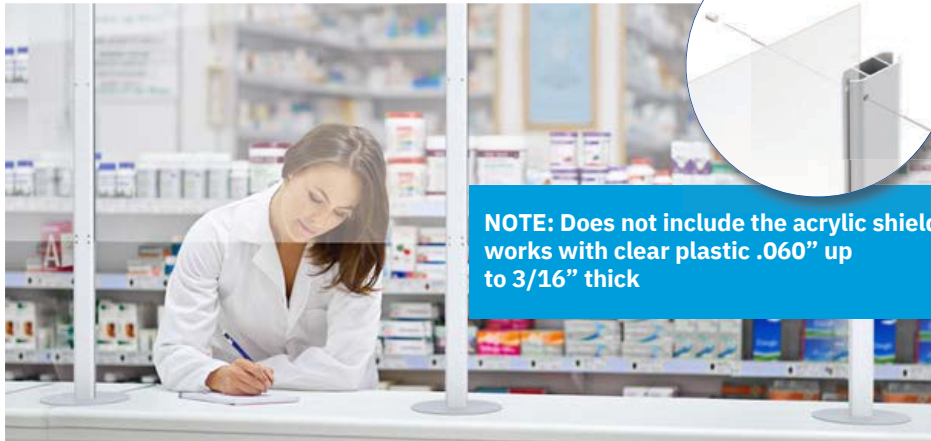
- Extremely Flexible System
- Quick connecting cross bars allow height of panels and size of access openings to be easily adjusted.
- Sturdy construction – free standing or on wheels
- Configurable into multiple sections or into "L" Shape to create additional protection for Cashiers & Customers
- Roll Around protective shields
- Make single or multiple sections

## Adjustable Channel System



## Free Standing Shield - Fixed Width

- 1/2" ID channel aluminum uprights
- Skyscraper Mounts™ | No minimums
- One piece heavy duty steel base
- Use .060 up to 1/2" thick plastic or acrylic
- Steel set screws lock panels in place (plastic set screws available if needed)
- Custom stop position is available by request



**NOTE: Does not include the acrylic shield, works with clear plastic .060" up to 3/16" thick**

**Cashier Shields**

- Aluminum uprights with steel bases
- Non-marring base options
- Use your own acrylic .060" up to 3/16" thick
- Standard uprights height is 36"



• **CBSHR-SS-RT-S** (Pair of end uprights)      • **CBSHR-DS-RT-S** (Center upright sold individually)

**Base Options**



Racetrack Base (-RT) with non-skid



Round Base (-RD) with VHB tape



Square Drill Down Base (-DD)



Clamp On Base (-CL)

Custom Bases Available

**End Uprights** w/Bases Description sold as a pair

**CBSHR-SS-RT-S** 36" h Uprights w/Racetrack Oval Bases

**CBSHR-SS-RD-S** 36" h Uprights w/Round Bases

**CBSHR-SS-DD-S** 36" h Uprights w/Square Drill Down Bases

**CBSHR-SS-CL-S** 36" h Uprights w/Clamp on Bases

**Center Upright** w/Base sold individually

**CBSHR-DS-RT-S**

**CBSHR-DS-RD-S**

**CBSHR-DS-DD-S**

**CBSHR-DS-CL-S**



**Economical Cashier Shields**

- Aluminum uprights with steel bases
- Non-marring base options
- Use your own acrylic or plastic lens .020" up to 3/16" thick

**Base Options**



6 3/4" Round Base

Model	Description
<b>PVT1</b>	Tabletop Exhibit, 4 Uprights 24", Holds 3 Panels, 12 Clips
<b>PVT2</b>	Tabletop Exhibit, 5 Uprights 24", Holds 4 Panels, 16 Clips
<b>PVT3</b>	Tabletop Exhibit, 4 Uprights 36", Holds 3 Panels, 12 Clips
<b>PVT4</b>	Tabletop Exhibit, 5 Uprights 36", Holds 4 Panels, 16 Clips

# SideBAR Table™

Brandable drink table perfect for upselling consumers. Elevate indoor and outdoor dining.



## Digital Print Opportunities

### Table Branding:

- Brand the table - ideal for brand sponsorship
  - Raise awareness in retail setting when product is offered

### Menu / Printed Collateral

- Drop in menu to enable upselling, provide recurring print revenue stream

### Ships FAST

- US Made – Manufacturer direct pricing
- All metal construction

